

Holiday Greetings

2013



*from The Directors, Staff and Volunteers
of Fighting Chance*

Free Cancer Counseling Center Serving the East End . . . Since 2002
Helpline 631.725.4646 . . . www.fightingchance.org
Section 501c3 - qualified charity

Wreath by Nancy Greenberg



CHAIRMAN'S LETTER – ANNUAL APPEAL

"You have cancer."

You may have heard those terrifying words or know someone who has.

Actually, 50% of all men and 33% of all women will be diagnosed with cancer during their lifetimes. Of our friends and neighbors who die in 2013 . . . 25% will die of cancer. It is the second leading cause of death in America.

As you can imagine, a cancer diagnosis brings with it a tidal wave of questions and bewilderment about where to get answers.

Can my disease be treated and how much will it cost? Is insurance available? How long will I live? How much pain will I have? Will I lose my hair? Could I lose my job? How do I break the news to my boss? When do I tell my kids?

What are the side effects of anti-cancer drugs? How do I locate resources I'll need? Is there someone – like a navigator – who can help guide me on this journey?

At Fighting Chance, we answer questions like these, and many others, every day, and always free of charge.

Since we opened our doors in 2002, our licensed health care professionals have helped more than 2,500 newly-diagnosed patients on the East End navigate their cancer journeys.

How is all this possible? Simple: because of you . . . members of our community giving generously to Fighting Chance. Because you believe that the East End healthcare system will be better and stronger with a first-class free cancer counseling center.

So if you've heard those three horrible words, or if you empathize with those living with cancer, or those who may get the disease . . . please donate.

Thank you.
Duncan N. Darrow,
Founder & Chairman

To donate to Fighting Chance please send a check to Fighting Chance,
P.O. Box 1358 Sag Harbor NY 11963, or visit our web site at www.fightingchance.org
and click **Donate Now**.

THANKS TO OUR VOLUNTEERS

As the year comes to a close, the Directors and Staff of Fighting Chance offer a very special Thank You to some 20 local residents who served as dedicated and dependable volunteers during 2013.

Scores of volunteers drove patients to doctor appointments . . . as far away as Stony Brook. A core of volunteers worked in our office, easing the administrative burden on our staff.

At almost every fundraising event – and we've had about eight this year – the assistance from volunteers was invaluable.

2013 VOLUNTEERS

Betty Cowles, Pat Matheson, Paul & Bernadette Da Scoli, Marie Klarman, Maryann Arendt, Joanne MacDowell, Nancy Petrie, Robyn Poto, Carolyn & Jean Hass, Patsy Howard, Tony Brandt, Catherine Buchakian, Mitten Wainwright, Elise O'Brien, Mary Cannon, Joanne Taylor, Jennifer Borg, Carol Mason, Dr. Hyman Rabinovitch, Randy Schwartz, Nancy Calvert, Susan Moyer, Helene Obey, Helene Necroto, and the Fighting Chance staff.

Remembering . . . Peter Darrow



**PETER
DARROW
MEMORIAL
FUND**
Financial Aid
for Cancer
Patients on the
East End

Every so often, in a public way, our charity acknowledges the loss of someone who had a very special relationship to Board Members or Staff. Someone who did not win their battle against cancer.

And so it is, at the end of this year, that we acknowledge the loss of Peter Darrow. He died on May 19, 2013, at age 62 after a courageous four-year battle against multiple myeloma.

The inspiration for starting Fighting Chance, in 2002, was the death, the year before, of Peter's mother Charlotte. She had lived in Sag Harbor for 20 years and died here after a battle with lung cancer.

Peter and his brother, Duncan Darrow, were her main caregivers. They soon found that they had countless questions about their mother's disease and how to best care for Charlotte. But there was nowhere, really, to go for answers. Now there is . . . just call Fighting Chance.

Peter was one of a small group of souls who were instrumental in starting Fighting Chance and he supported the charity for over a decade.

In his honor, scores of Peter's friends made donations to Fighting Chance – and we now have put all of these gifts together into the Peter Darrow Memorial Fund for Financial Aid to Cancer Patients on the East End. It is our "neighborhood fund" but now more substantial and better equipped to lend a helping hand.

Peter Darrow Memorial Fund – Emergency Financial Aid – Examples of Grants Made in 2013 to East End Cancer Patients (all grants were \$250 to \$500)

Cancer Type	Reason for Grant
Lymphoma	Patient was laid off after a cancer diagnosis; helped with one month of rent and negotiated to reduce rent on family home.
Breast Cancer (Metastatic)	Patient fell far behind on LIPA bill; we negotiated new payment schedule and contributed some upfront cash
Throat	Patient was laid off after cancer diagnosis; our grant helped pay the winter oil bill to keep the heat on at home.
Bladder	Patient lost job as cancer treatments became all-consuming; helped restructure home lease terms with landlord and helped pay back rent.
Lung	Patient faced an exceptional number of long-distance trips to radiation clinic and that created outsized gas bill; we purchased "Hess card" to assist with those costs.
Brain	Patient was a widower no longer able to live alone; was moving into subsidized assisted living; we contributed to the security deposit needed.

FIGHTING CHANCE 2014 CALENDER

FEATURING THE PAINTINGS OF SUSAN NASH

JANUARY 2014



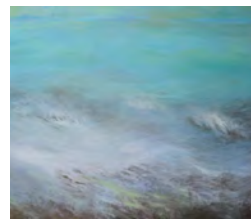
SUN	MON	TUES	WED	THURS	FRI	SAT
			1	2	3	4
5	6	7	8	9	10	11
12	13	14	15	16	17	18
19	20	21	22	23	24	25
26	27	28	29	30	31	

FEBRUARY 2014



SUN	MON	TUES	WED	THURS	FRI	SAT
						1
2	3	4	5	6	7	8
9	10	11	12	13	14	15
16	17	18	19	20	21	22
23	24	25	26	27	28	

MARCH 2014



SUN	MON	TUES	WED	THURS	FRI	SAT
						1
2	3	4	5	6	7	8
9	10	11	12	13	14	15
16	17	18	19	20	21	22
23	24	25	26	27	28	29
30	31					

APRIL 2014



SUN	MON	TUES	WED	THURS	FRI	SAT
		1	2	3	4	5
6	7	8	9	10	11	12
13	14	15	16	17	18	19
20	21	22	23	24	25	26
27	28	29	30			

MAY 2014



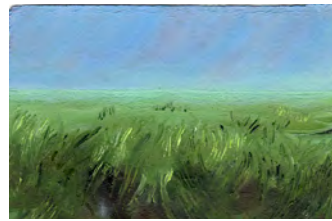
SUN	MON	TUES	WED	THURS	FRI	SAT
				1	2	3
4	5	6	7	8	9	10
11	12	13	14	15	16	17
18	19	20	21	22	23	24
25	26	27	28	29	30	31

JUNE 2014



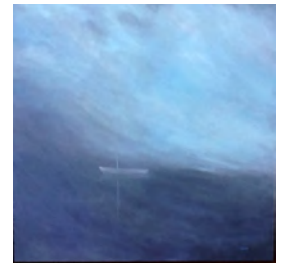
SUN	MON	TUES	WED	THURS	FRI	SAT
1	2	3	4	5	6	7
8	9	10	11	12	13	14
15	16	17	18	19	20	21
22	23	24	25	26	27	28
29	30					

JULY 2014



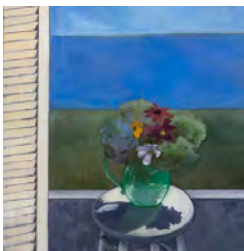
SUN	MON	TUES	WED	THURS	FRI	SAT
		1	2	3	4	5
6	7	8	9	10	11	12
13	14	15	16	17	18	19
20	21	22	23	24	25	26
27	28	29	30	31		

AUGUST 2014



SUN	MON	TUES	WED	THURS	FRI	SAT
					1	2
3	4	5	6	7	8	9
10	11	12	13	14	15	16
17	18	19	20	21	22	23
24	25	26	27	28	29	30
31						

SEPTEMBER 2014



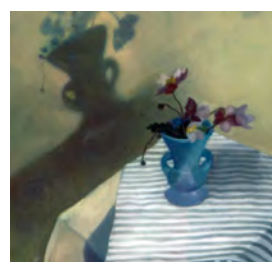
SUN	MON	TUES	WED	THURS	FRI	SAT
	1	2	3	4	5	6
7	8	9	10	11	12	13
14	15	16	17	18	19	20
21	22	23	24	25	26	27
28	29	30				

OCTOBER 2014



SUN	MON	TUES	WED	THURS	FRI	SAT
			1	2	3	4
5	6	7	8	9	10	11
12	13	14	15	16	17	18
19	20	21	22	23	24	25
26	27	28	29	30	31	

NOVEMBER 2013



SUN	MON	TUES	WED	THURS	FRI	SAT
					1	2
3	4	5	6	7	8	9
10	11	12	13	14	15	16
17	18	19	20	21	22	23
24	25	26	27	28	29	30

DECEMBER 2014



SUN	MON	TUES	WED	THURS	FRI	SAT
	1	2	3	4	5	6
7	8	9	10	11	12	13
14	15	16	17	18	19	20
21	22	23	24	25	26	27
28	29	30	31			



FIGHTING CHANCE
Free Cancer Counseling Center Serving the East End . . . since 2002

For Counseling • To Volunteer • To Donate
Or for information, please call our Sag Harbor office at 631 725 4646
www.fightingchance.org

